



# BARROWHILL HALL

NURSING | RESIDENTIAL | DEMENTIA

Luxury Living, Exceptional Care & Unrivalled Views  
Award Winning Dementia Care and Nursing Home



See all the reviews for yourself at



Please telephone: 01889 591006

Email: [enquiries@barrowhill.co.uk](mailto:enquiries@barrowhill.co.uk)

Website: [www.barrowhillhall.co.uk](http://www.barrowhillhall.co.uk)



# 1. Welcome to Barrowhill Hall



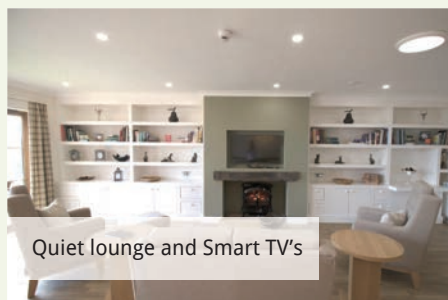
Geoff Aris (award winners)



Fine Dining



Senior Carer Lauren



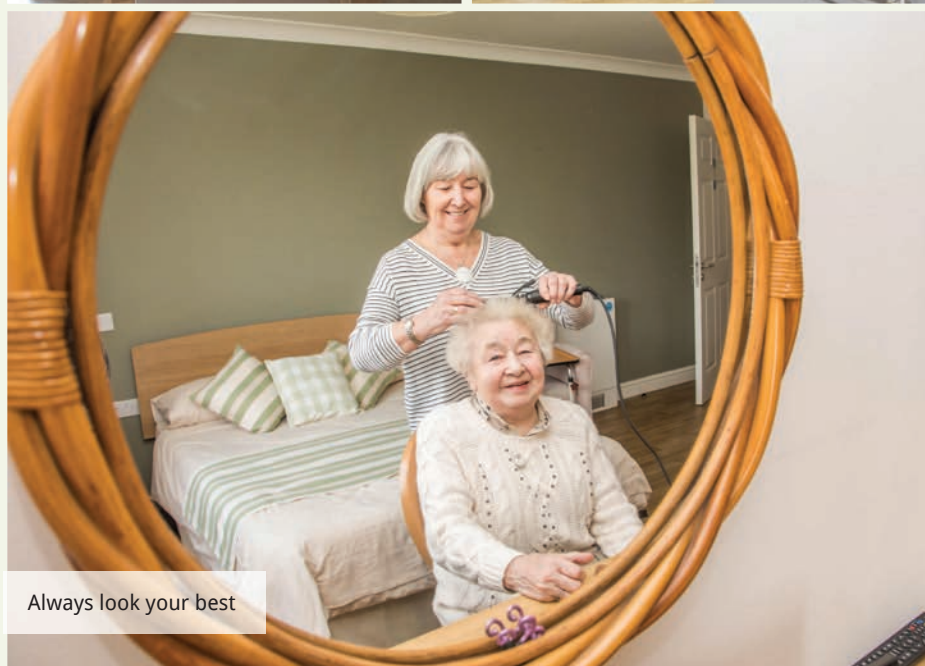
Quiet lounge and Smart TV's



Fountain Spa



Luxury Décor



Always look your best



Wide and bright hallways

“ Barrowhill Hall is an award-winning specialist dementia care and nursing home standing on the crest of a hill on the Derbyshire/Staffordshire border in a beautiful and tranquil setting with panoramic views of the surrounding countryside. We offer the highest quality residential and nursing care in a luxurious, homely and safe environment.

Barrowhill Hall consists of two independent care centres being Barrowhill Hall and Churnet Lodge. Churnet Lodge focuses on providing a socially supportive environment for those living with the early stages of Dementia. Care plans are carefully compiled, updated and are overseen by our management team. Whilst Barrowhill Hall offers care and support for people who have more complex needs requiring the meticulous formulation, implementation and evaluation of bespoke, person centred care plans by our dedicated and professional nursing team.

Both Barrowhill and Churnet Lodge have been specially designed in accordance with the innovative Stirling Academy guidance along with our own research into how to enhance the living environment for people living with memory loss. We have a mixture of larger and quieter lounges, film rooms, a library, spa and hairdressers. The outdoor space is extensive and has far reaching views of the local countryside and the formal gardens of the JCB world headquarters.

All bedrooms are appointed to the highest standards and the majority offer en-suite accommodation. We can also accommodate couples in a studio with a bedroom adjoining a quiet lounge. I've specialised in Mental Health Nursing for over 20 years, much of that time being spent within the care home industry and I can say without doubt that it's not common place for care to be delivered like it is at Barrowhill Hall, we feel privileged to be able to provide the care that people deserve. We have a highly trained staff team who with their compassion deliver the highest levels of care and strive only for positive outcomes for the people who live where we work. ”

**Mr Matthew R Whitfield – Home Manager**  
**Registered Mental Health Nurse and Dementia Care Mapper**  
 Please Telephone 01889 519006 Email [enquiries@barrowhillhall.co.uk](mailto:enquiries@barrowhillhall.co.uk)



## 2. Our Care Services

Barrowhill Hall (across it's two independent care households) is the perfect choice for those in search of quality care, an active social life, comfortable and luxurious surroundings and nutritious home cooked meals. All of which offered in a warm, safe, secure and welcoming environment.

Friendly, highly qualified staff are in attendance 24-hours a day, and the residents they support are given the very best care and attention. Resident's individual requests are constantly monitored and are continually tailored to meet their specific needs. This way we can offer full continuity of care and achieve positive outcomes for every individual living with us.

Our two luxury care and nursing households:



### Dementia Care

At Barrowhill Hall we provide the finest, tailored residential and nursing services to all individuals who choose to live with us. Round the clock nursing and personal care is always on hand.

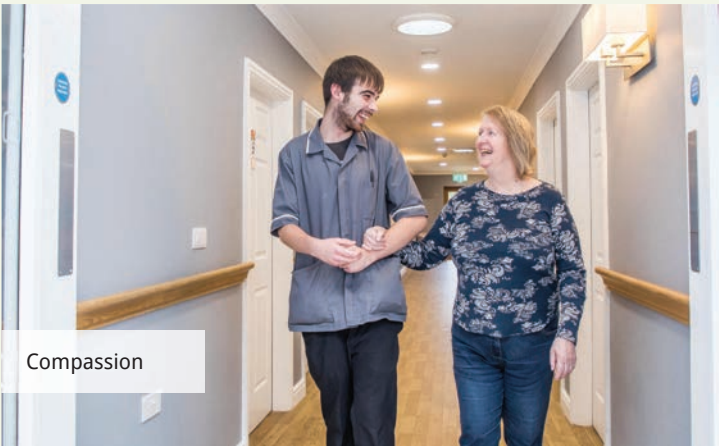
Our care specialism is dementia and associated forms of the condition with Care Plans carefully formulated and recorded on our state of the art electronic care planning system. Our staff are chosen not only for their expertise and work ethic, but also for their compassion, sensitivity and dedication. Our above average staffing ratio means help is always at hand!



**Nursing Care**  
At Barrowhill Hall we offer high quality, 24 hour nursing care delivered by our experienced Nursing Team. Importantly this care is tailored to the individual to ensure that the resident receives the very best care with full oversight by our Registered Mental Health Nurses and our Registered General Nurses who oversee clinical needs of our residents.

### Residential Care

The choice to move into residential care is always difficult, however here at Barrowhill we believe it's a positive choice, with an opportunity to forge new friendships and live an active lifestyle. This is achieved by offering stimulating social activities and accommodating staff which go out of their way to allow individuals to do what they want in our unique community. Lives are lived with purpose while all the time being carefully overseen by our MSc Dementia Qualified Staff.



**Respite & Day Care**  
We offer respite care or day care for those usually cared for by a relative, friend or professional carer. As a carer you can relax, knowing that your relative or friend is in a safe and supportive environment, with a lovely friendly atmosphere and first-class care tailored to their needs. We also offer convalescent breaks for individuals who are well enough to leave hospital but not yet well enough to return home.



### 3. Living at Barrowhill Hall

Barrowhill Hall offers spacious, homely luxury with the latest modern facilities to help those individuals living with memory loss. The home offers free ultra-high speed Fibre Optic Wifi for all residents and visitors.

#### Bedrooms

All bedrooms are private, exquisitely decorated and generous in size, featuring en-suite bathrooms, seating areas and modern amenities. The majority of bedrooms have views over the surrounding valleys and countryside. The rooms have been furnished to reflect the peace and tranquillity of the living environment, but we encourage everyone living with us to put their personal stamp on them, should they wish.

There is also the choice of a studio apartment, with an interconnecting bedroom and private lounge/dining area. These are perfect for couples or anyone requiring slightly more space.

For ease of access, a host of mobility features are discreet but essential touches. Nurse call systems help residents receive assistance at the touch of a button and specialist design means that doors are easier to open, the timber effect anti-slip flooring is consistent throughout the home to remove sensory obstacles for residents, whilst the specific lighting design helps maintain safe and comfortable environment.



Mood lighting



Typical Bedroom



Main Lounge



Quiet Lounge



Country Kitchen



Space

#### Living spaces

We have a mixture of communal rooms which offer a variety of tranquil settings, creating an important therapeutic atmosphere. We have a range of homely lounges, some offering large smart TV screens for films nights and others offering quiet reflection space with beautiful views out of the windows. We have a library, country kitchen and activities and entertainment areas for residents to enjoy the community atmosphere, promote independence and achieve positive outcomes for our residents.

There is a professional hairdressing salon in both households and in Churnet Lodge we have a full spa facility including a treatment room and a spa bath with soothing lighting and music.

We have extensive grounds with safe and secure gardens where you can take a stroll, do a spot of gardening or sit and have a drink on the terrace whilst soaking up the view. Occasionally the original lawn tennis court is re-instated and the odd game of tennis played whilst having summer BBQ's, picnics or afternoon teas.



## 4. Outside Life at Barrowhill Hall



The view from one of our gardens

Fresh air, natural light, and a good view out from a building have all been proven to have a hugely beneficial effect for individuals living with dementia.

*Designing outdoor spaces for people living with Dementia – In association with the Stirling University and Bob Flowerdew from the long-running BBC Radio 4 Gardeners Questions programme in which amateur gardeners can put questions to a panel of experts.*

At Barrowhill Hall we have the above in abundance. We have 8 acres of fantastic sensory gardens, a lawn tennis court, an orchard walk and a fantastic position on the crest of a hill with views over the surrounding countryside from all windows. We encourage everyone living with us to enjoy the gardens and to keep their fingers green if they wish.

Bob Flowerdew - "the home is Phenomenal!"



Gardening with Bob Flowerdew



Grand Entrance



Unrivalled views

“The truly healthy environment is not merely safe but stimulating.”

William H Stewart  
*Environmental Science (1968)*



Quiet and peaceful lunch



Autumn mood





Rochester Choir

## 5. Food & Dining



Ladies who lunch



British Bake off

We like to make every dining opportunity an enjoyable experience – breakfast, lunch and dinner. Our cooks pay close attention to personal preferences and we ensure we use the freshest ingredients from local suppliers wherever possible.

Our menu choices change constantly and include many traditional homely meals. The cooks work closely with the care team and registered dieticians to ensure each meal meets our resident's requirements and preferences.

Freshly prepared food and snacks can be enjoyed wherever a resident wishes. We also encourage families and friends to come and join their loved ones for a meal and join in the dining experience.

## 6. Activities



Val - Activities coordinator

We have a full time Team of activities coordinators who plans a varied programme of activities that are entertaining and socially stimulating as well as being tailored to the individual. We actively engage with the community be mean of attending events and hosting visitors and events at the home.

We have three full time activities coordinators offering a very comprehensive and person centred approach to activities with a very busy and stimulating program, also the care team are very pro-active when it comes to facilitating occupation and engagement for residents, activity's include: excursions, entertainers, cinema evenings, tea mornings, arts and crafts, gardening, school visits amongst many other things. The Activities team strive to keep residents active, engaged and promote independence even for those in need of the most care.

“We are committed to promoting our residents' physical and mental independence.”



## 7. Our Staff

### Mr Matthew Whitfield (Registered Manager + RMN)

The home is managed by Mr Matthew Whitfield who is a Registered Mental Health Nurse and Dementia care mapper with 25 years' experience in Residential and Nursing Care. Matthew oversees the day to day running, liaising with GP's, Community Psychiatric Nurses, Mental Health Assessors, Dietitians and other visiting professionals. He also chairs regular resident's family meetings.

*'I like to hold regular meetings with resident's families to ensure we are delivering the service we offer. When I can, I also try to involve the residents input when planning their own care and treatment, as well as their families. The importance of resident empowerment and participation is really important.'* Matthew makes himself available to Residents, Staff and Family members with his door always very much open, *'Being open, honest and transparent has always been at the forefront for me.'*



### Mrs Dawn Dennison (Finance Manager)

Finances can be a concern to a lot of families. Finance Manager Dawn oversees the finances of the home and is available to answer any questions families may have.



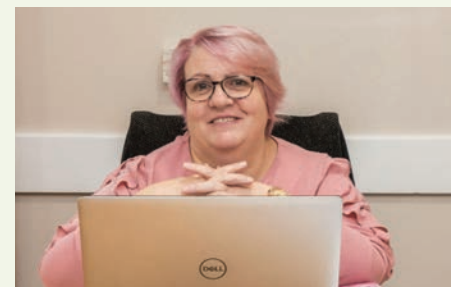
### Geoff Aris (Lead Assessor and Quality and Compliance)

Geoff performs the role of our Lead Assessor and Quality and Compliance of the home.

Geoff holds a degree in Advanced Dementia studies from Bradford University. Along with visiting people's homes or temporary homes for assessments, he also ensures the quality of service is high and we remain compliant with our regulators.



Members of the team



### Mrs Mel Boulton (Clinical Lead Nurse)

Mel works closely with Matthew to ensure the nursing and care team have the support and equipment required to deliver 1st class care to our residents. Mel also is our expert clinical link to visiting professionals.

## 8. The Local Area



Uttoxeter Races (Ladies Day)

Located on the crest of a hill, moments from Denstone Village (the river Churnet) and a short 5 minute drive to the bustling market towns of Uttoxeter and Ashbourne.

We have the outstanding Peak District on our doorstep and panoramic views from all aspects of the home over the Derbyshire and Staffordshire countryside.

The area itself is steeped in tradition. The beautiful JCB Headquarters, lakes and gardens are just down the road; the Uttoxeter Racecourse is 5 minutes away and the 'Potteries' are 15 minutes away, famed for household names such as Spode, Wedgwood and Royal Doulton. The Royal Shrovetide Football match is a fantastic local event. Held in Ashbourne on Shrove Tuesday and Ash Wednesday and having been played annually since the 12th century.

The prestigious Denstone College and Abbotsholme Schools are both visible from the home and together with a new PGA standard golf course on the JCB estate, can be reached by car in a couple of minutes. Alton Towers is a 5 minute drive through the quaint village of Alton. In the village of Denstone there is the multiple award winning Denstone Farm Shop, this serves up delicious local food as well as housing a local family supermarket. Well worth a visit and recently voted best retailer in Staffordshire.



Ashbourne High Street



# 9. Our Location

Barrowhill Hall is located in Rocester, between Uttoxeter and Ashbourne. We are at the top of the hill overlooking the formal gardens of the JCB World Headquarters.

We are on the Staffordshire and Derbyshire border and easily accessible from all directions:

- Uttoxeter - 5 miles
- Ashbourne - 5 miles
- Derby - 15 miles
- Stoke on Trent - 15 miles
- Burton upon Trent - 16 miles

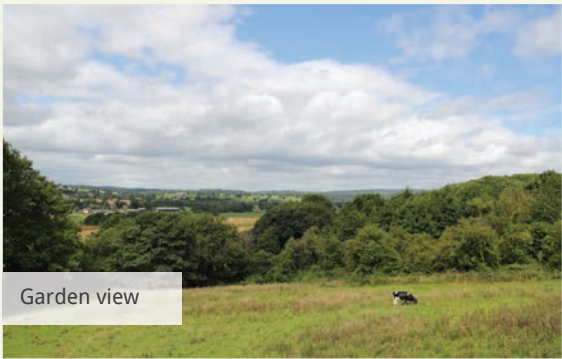
## Public Transport Options

1. From Ashbourne/Denstone - Bus - SW1/Swift to Northfield Avenue, Rocester and short journey to the home thereafter
2. From Uttoxeter - Bus - 32A/A1/SW1 to Northfield Avenue, Rocester and short journey to the home thereafter

Please do not hesitate to contact the home for routes and transport to the home.

## How to Find Us

Address: Barrowhill Hall Nursing Home, Rocester, Nr Uttoxeter, Staffordshire, ST14 5BX



### Like Facebook?

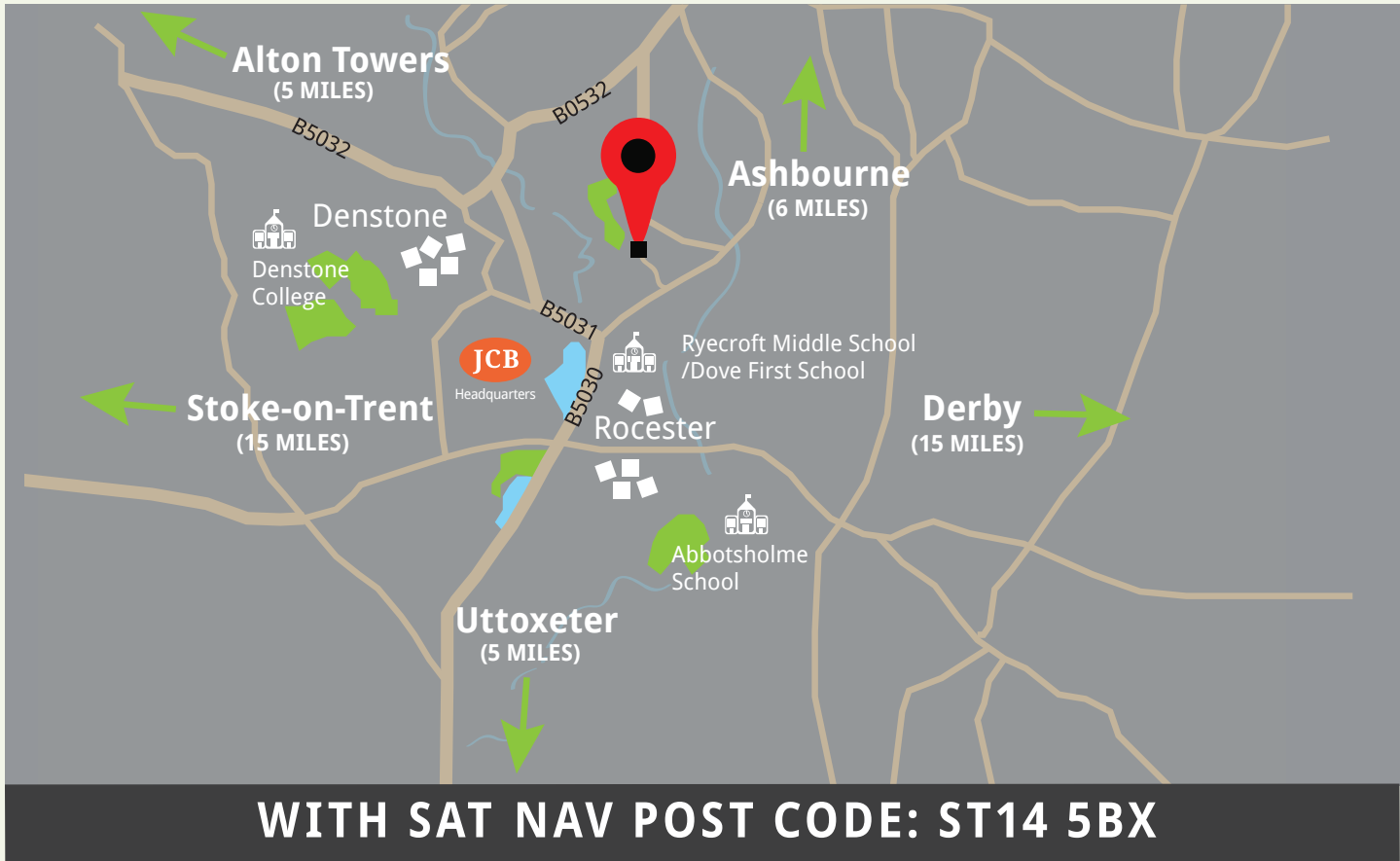
Why not have a look at our very active Facebook page and keep up to date with daily life at Barrowhill Hall  
<https://www.facebook.com/Barrowhill1/>



BARROWHILL HALL

NURSING | RESIDENTIAL | DEMENTIA

## Notes







Barrowhill by air



Local village



High Staff Level

Please do not hesitate to get in touch  
to arrange a viewing and see it for yourself.



Tel: 01889 591006



Email: [enquiries@barrowhillhall.co.uk](mailto:enquiries@barrowhillhall.co.uk)



Web: [www.barrowhillhall.co.uk](http://www.barrowhillhall.co.uk)



# BARROWHILL HALL

NURSING | RESIDENTIAL | DEMENTIA